



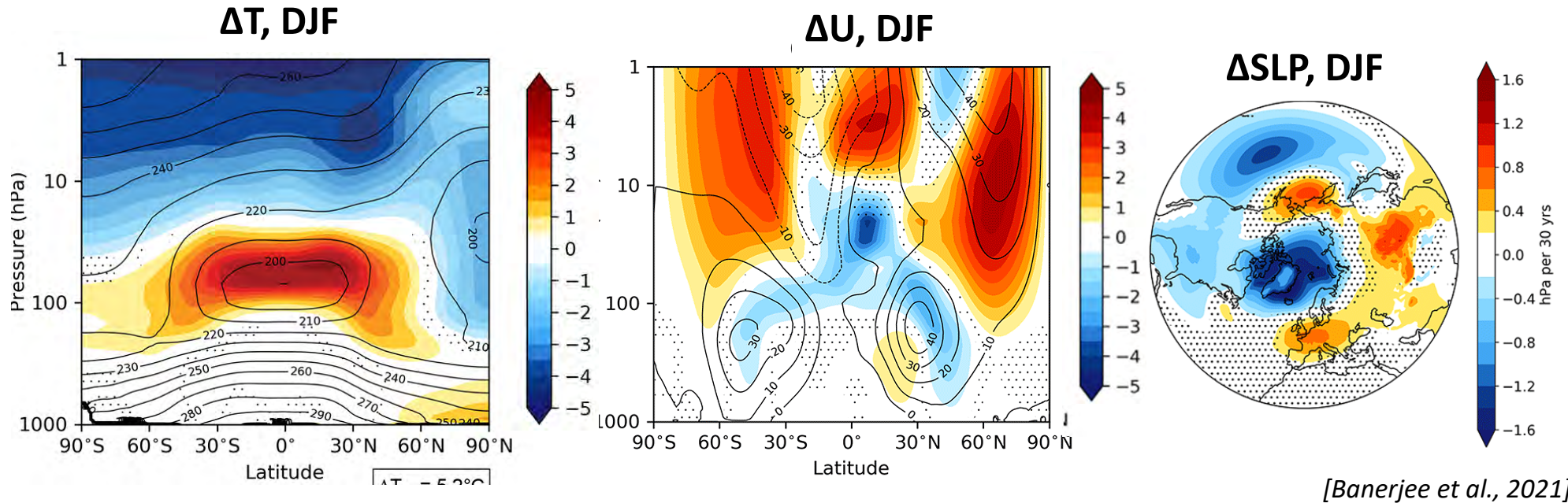
Cornell University

**Project Title:** “Understanding and quantifying uncertainties in the ozone and circulation response to Stratospheric Aerosol Injection”

Ewa Bednarz and Amy Butler

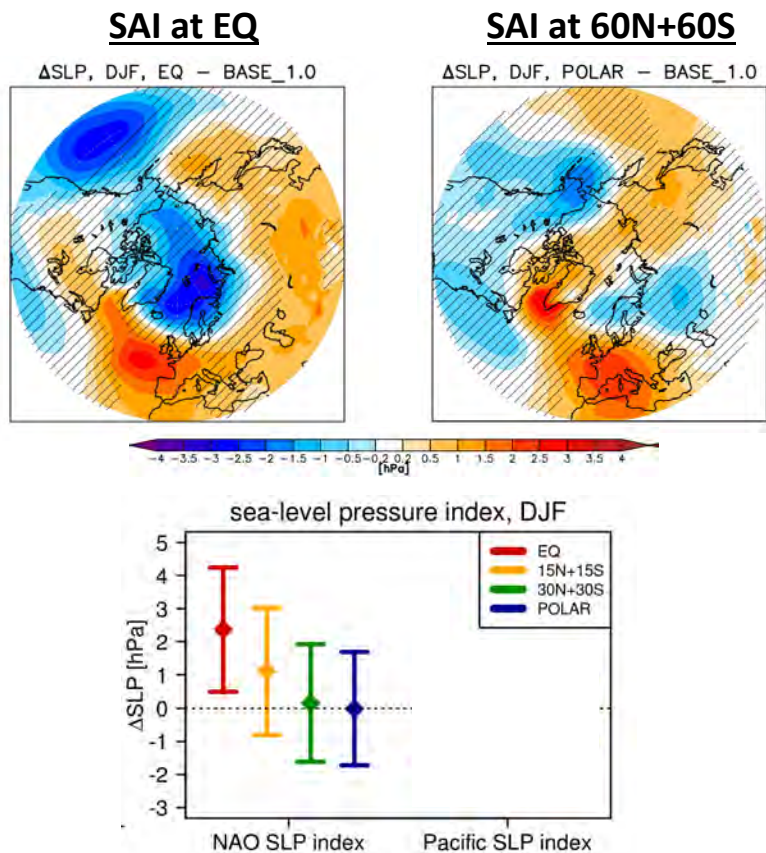
**Collaborators:** Douglas MacMartin and Daniele Vioni (Cornell University),  
Jadwiga Richter and Julio Bacmaister (NCAR-CGD), Simone Tilmes (NCAR-ACOM)

# An example SAI response: the NH winter climate

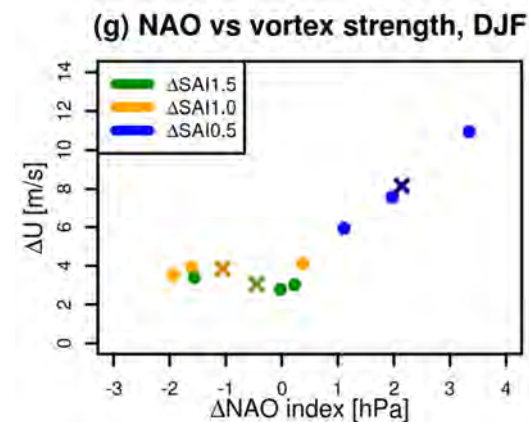
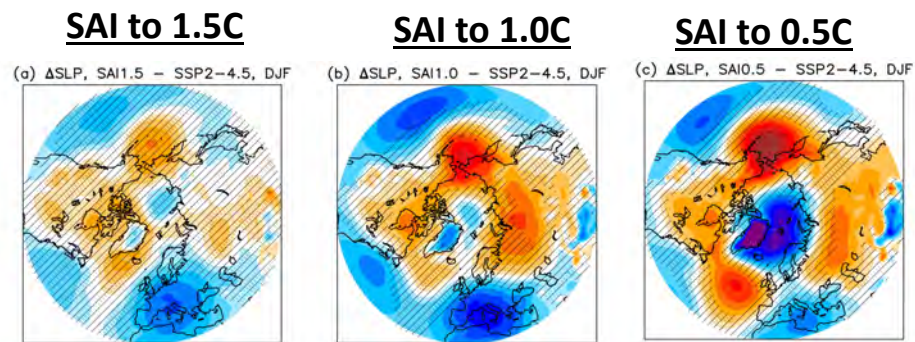


- Previous studies showed SAI can impact NH winter surface climate (NAM/NAO)
  - usually only a single (set of) SAI location(s) & high-end GHG scenario (i.e. RCP8.5)
- **How the response depends on SAI location/timing (=strategy) and magnitude (=scenario)?**

**=> The SAI response strongly depends on:  
SAI location/timing (= strategy) & SAI magnitude (= scenario) !!**



[Bednarz et al., 2023a, ACP, doi:10.5194/acp-23-13665-2023]



[Bednarz et al., 2023b (in press), GRL, doi:10.22541/essoar.168563422.29801203/v1]